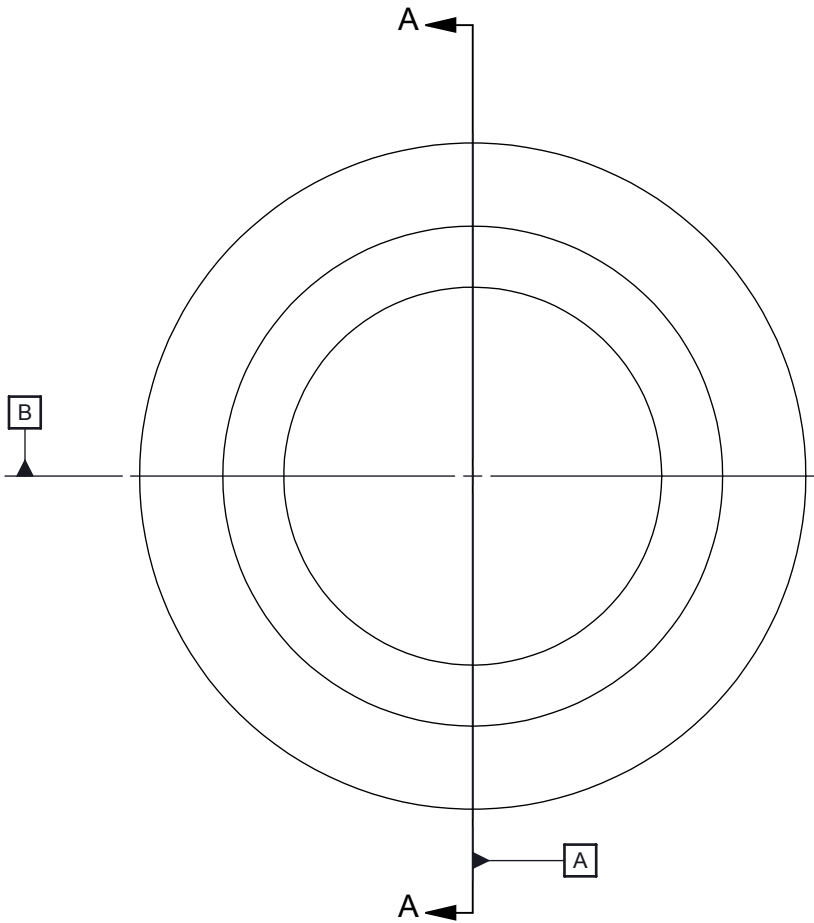
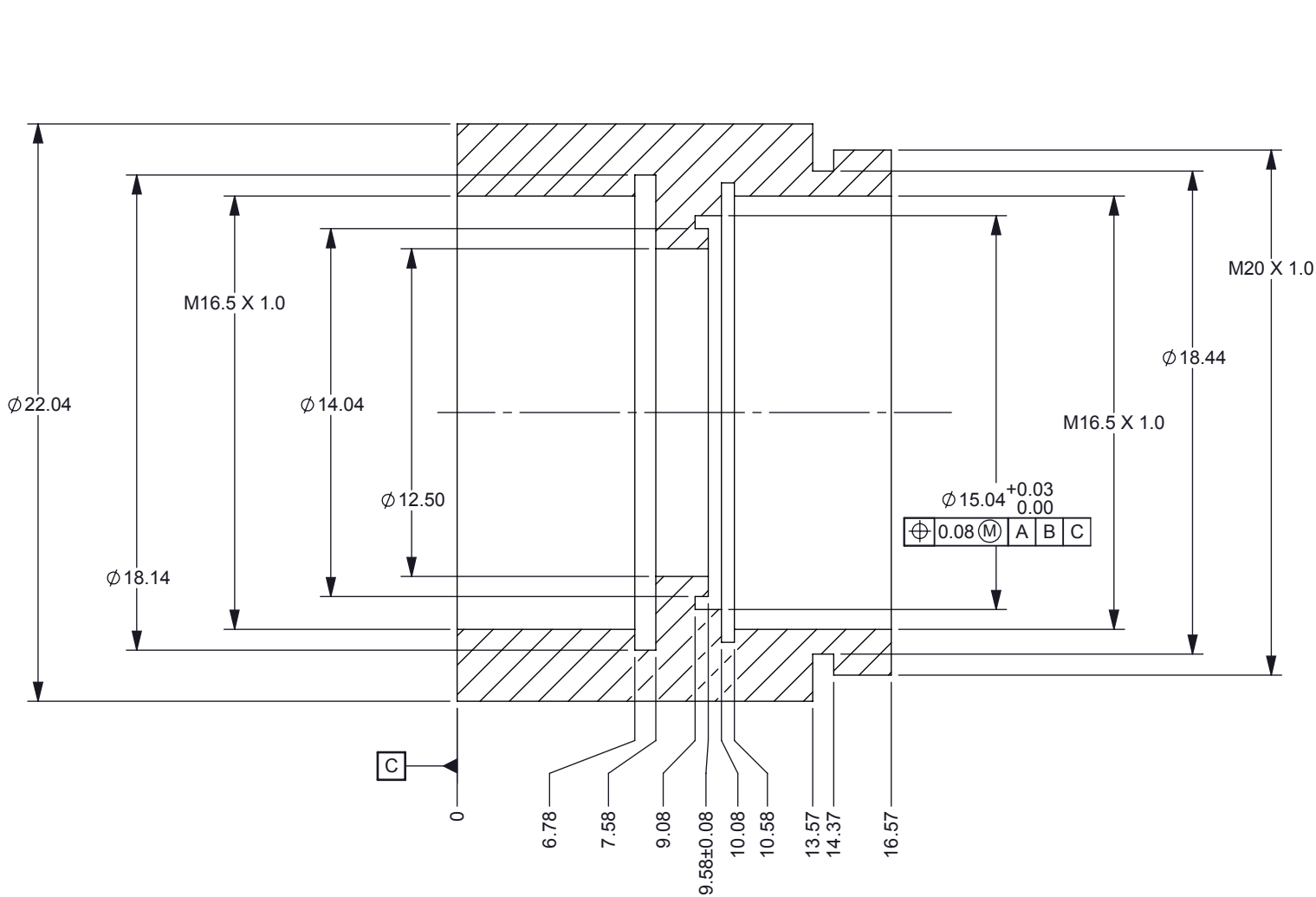
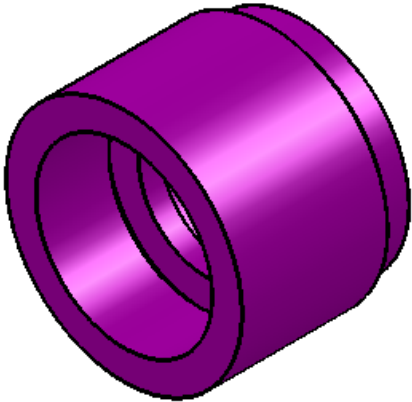


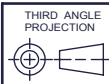
NOTES: UNLESS OTHERWISE SPECIFIED:

1. MATERIAL: 6061-T6 ALUMINUM
2. LIGHT BEADBLAST EXTERIOR SURFACES ONLY (MATTE FINISH); MASK INTERNAL FEATURES AND THREADING TO ENSURE TOLERANCES ARE HELD.
3. FINISH: ANOPLATE ANOBLACK EC PROCESS. ALTERNATE BLACK ANODIZING PROCESSES NOT CONSIDERED AN EQUIVALENT

REVISIONS			
REV	DESCRIPTION	DATE	BY
A	ECO #2136196 - INITIAL RELEASE	9/20/13	RDR



SECTION A-A



UNLESS OTHERWISE SPECIFIED		DWN R ROWE	DATE 9/8/2013	TEXAS INSTRUMENTS	
• DIMENSIONS ARE IN MILLIMETERS		Engr			
• TOLERANCES: ANGLES ±1°		CQE/QA		HOUSING, CL1	
2 PLACE DECIMALS ±0.25		CM		SIZE DWG NO	
1 PLACE DECIMALS ±0.50		Apprvd		B	2513384
• DIMENSIONAL LIMITS APPLY BEFORE PROCESSES				REV	
• INTERPRET DIMENSIONS IN ACCORDANCE WITH				A	
ASME Y14.5M-1994				SCALE 4:1	
• REMOVE ALL BURRS AND SHARP EDGES				SHEET 1 OF 1	
• PARENTHEetical INFO FOR REF ONLY					